

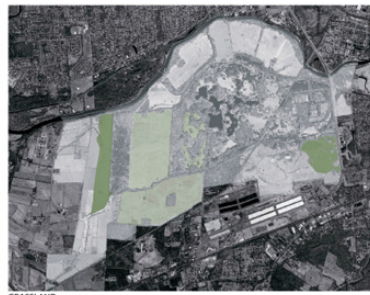
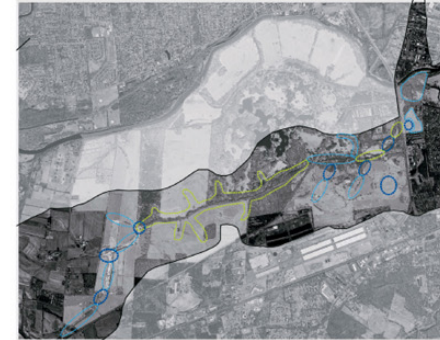
# ANALYSIS & MAPPING: Planning for Environmental Stewardship

How does a site with historical man-made landscapes be transitioned into a more natural, environmentally sustainable mode, while also being accessible to the public for education?

CLIENT- DORIS DUKE CHARITABLE FOUNDATION, HILLSBOROUGH, NJ; LANDSCAPE ARCHITECTS/ECOLOGISTS- EDAW, INC, NY, NY; ARCHITECT - VITETTA, PHILA, PA, 2007

Duke Farms is a 2,700 acre site mainly composed of farmland, meadows, woodland, lakes and streams. It lies along the Raritan River in northern New Jersey, an oasis in the most congested state in the country. Purchased by J.B. Duke around the turn of the century, and utilized as grounds for his innovative though engineered ideas in hydrology and botany, it is now being envisioned as a place to practice and educate the public on environmental stewardship and conservation, including renewable energy and habitat restoration.

Working for EDAW, I produced these maps, among others, to illustrate existing conditions and proposed restorative interventions on the site.



82 ACRES  
FLOODPLAIN RESTORATION - LIMITED MGMT

15 ACRES (Between West Rd & Lake #15)  
WILDFLOWER MEADOW - LIMITED MGMT

11 ACRES (Between Old Foundation and Ocho's Garden)  
WOODLAND GARDEN UNDERSTORY PLNTG - LIMITED MGMT

40 ACRES  
FLOODPLAIN RESTORATION - LIMITED MGMT

6 ACRES (Between Reservoir & Lake #45)  
AMPHIBIAN ZONE - AMPHIBIAN MGMT

13 ACRES (Zornhorn McCreary Woods)  
RESEARCH MEADOW (INSECT HABITAT) - MEDIUM MGMT

140 ACRES (McCreary Woods)  
FOREST MGMT - HIGH

100 ACRES (Kaufman Woods)  
FOREST MGMT - LIMITED

92 ACRES (Woods east of Roycroft Road)  
FOREST MGMT - LIMITED

174 ACRES (Skaret Shoot Fields)  
BIRD GRASSLAND RESTORATION

6,485 LF (stream system in Oligart/Kaufman Farms)  
STREAMBANK BIOFILTRATION FOR AG RUNOFF (HIGH INITIAL COSTS)

50 ACRES  
BIRD GRASSLAND RESTORATION

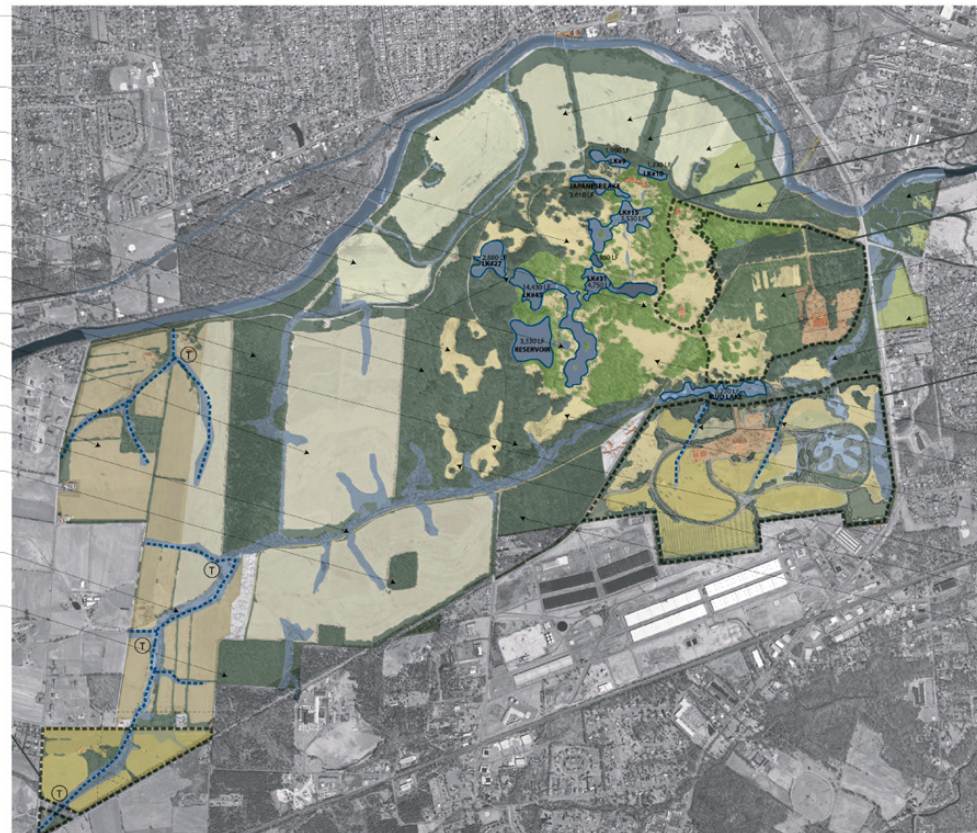
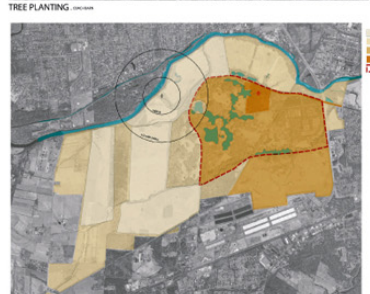
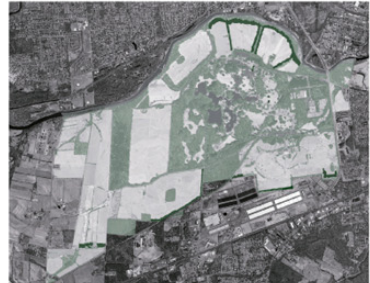
19,380 LF (Duke's Brook between Mud Lake & Kaufman Woods)  
STREAMBANK RESTORATION (LIMITED INITIAL COSTS)

6 ACRES (Doris Woods)  
FOREST MGMT - HIGH

(ultimate treatment: BIRD-GRASSLAND MGMT)

18,700 LF (stream system in Dutchess & Davis Farms)  
STREAMBANK RESTORATION (LIMITED INITIAL COSTS)

35 ACRES (Patriots Woods)  
FOREST MGMT - LIMITED



40 ACRES  
FLOODPLAIN RESTORATION

24 ACRES  
FLOODPLAIN RESTORATION (buffer between fields 38 & 39) - 35 ACRES  
FOREST MGMT - LIMITED

32 ACRES  
FLOODPLAIN RESTORATION

25 ACRES  
FLOODPLAIN RESTORATION (44 ACRES (Couch Barn) MIXED MGMT)

26 ACRES  
FLOODPLAIN RESTORATION (east of Rt 206, north parcel) - 30 ACRES  
FOREST MGMT - LIMITED

159 ACRES (Display Gar MIXED MGMT)

(Nursery Woods) 24 ACRES  
FOREST MGMT - HIGH

(south of Nursery Woods) 47 ACRES  
WILDFLOWER MEADOW - LIMITED MGMT

(east of Rt 206, south parcel) 26 ACRES  
FORESTED WETLAND

(Duke's Brook, east of Mud Lake) 7,715 LF  
STREAMBANK RESTORATION

(N of Duke's Parkway West & W of Rt 206) 17 ACRES  
FOREST MGMT - LIMITED

300 ACRES (Farm Barn) ORIENTATION CENTER

RIPARIAN EDGE - See Lake Areas on Plan

(Great Lawn) 15 ACRES  
WILDFLOWER MEADOW - HIGH MGMT

(Farm Barn area, field #9) 1,620 LF  
STREAMBANK & RIPARIAN RESTORATION

(Bicycling Center) 6 ACRES  
RECYCLING MEADOW

(Southwest McCreary Woods) 14 ACRES  
BUTTERFLY MEADOW - HIGH MGMT

(South-center McCreary Woods) 9 ACRES  
BUTTERFLY MEADOW - HIGH MGMT

(Farm Woods) 40 ACRES  
FOREST MGMT - LIMITED

## HABITAT MAP WITH MEASUREMENTS

